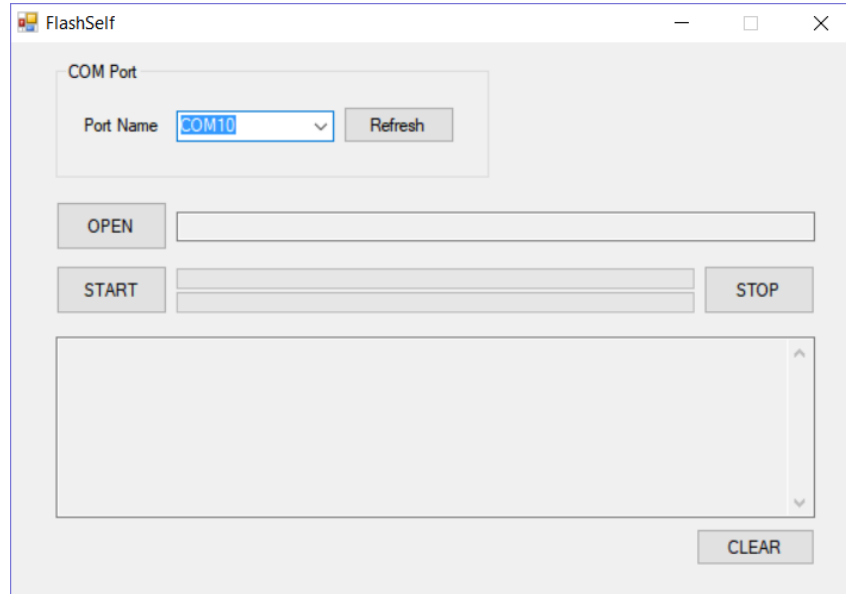
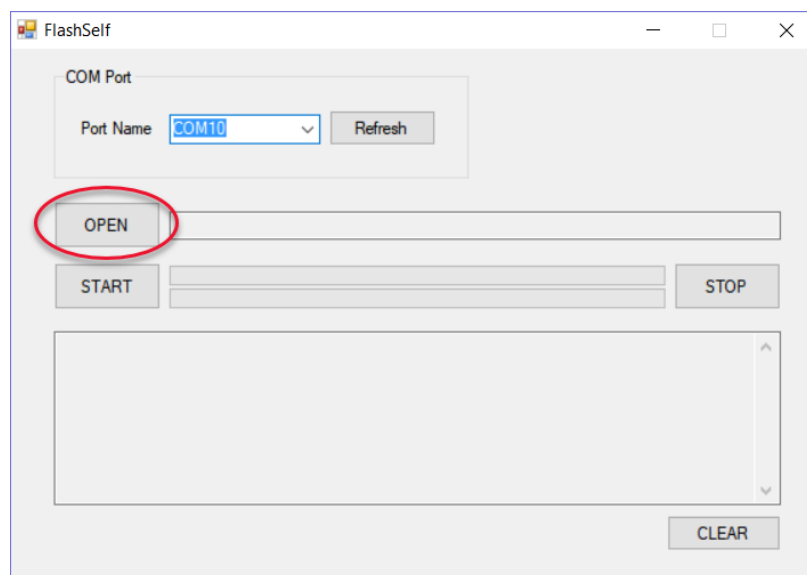


GX-6000 IrDA Reprogramming Instructions

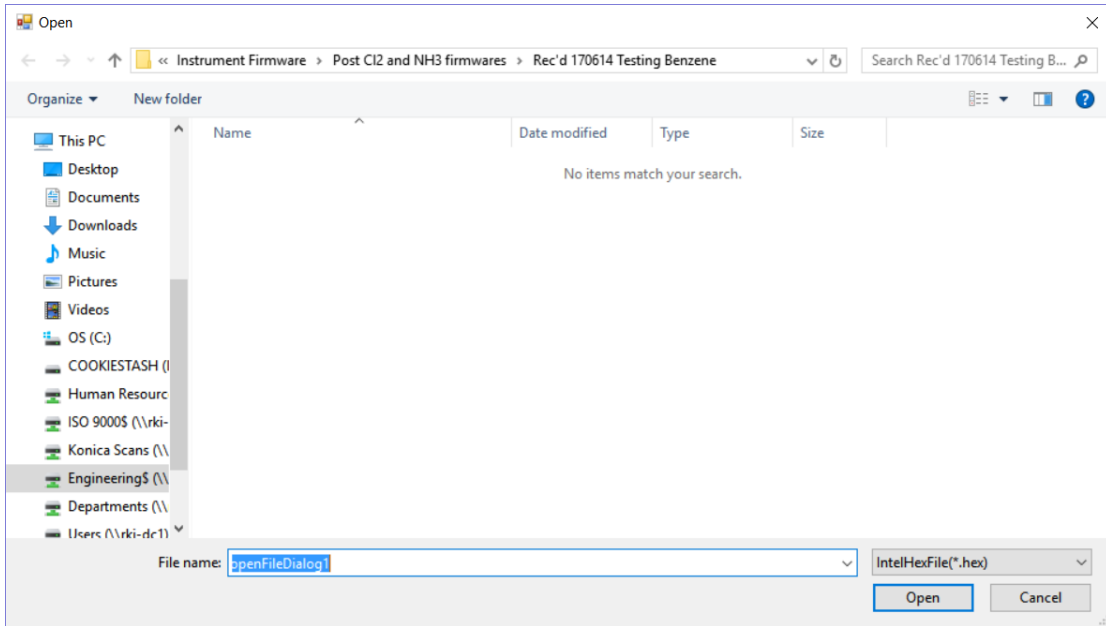
1. Plug your IrDA cable into your computer.
2. Double click the FlashSelf.exe file.
3. The main window appears.



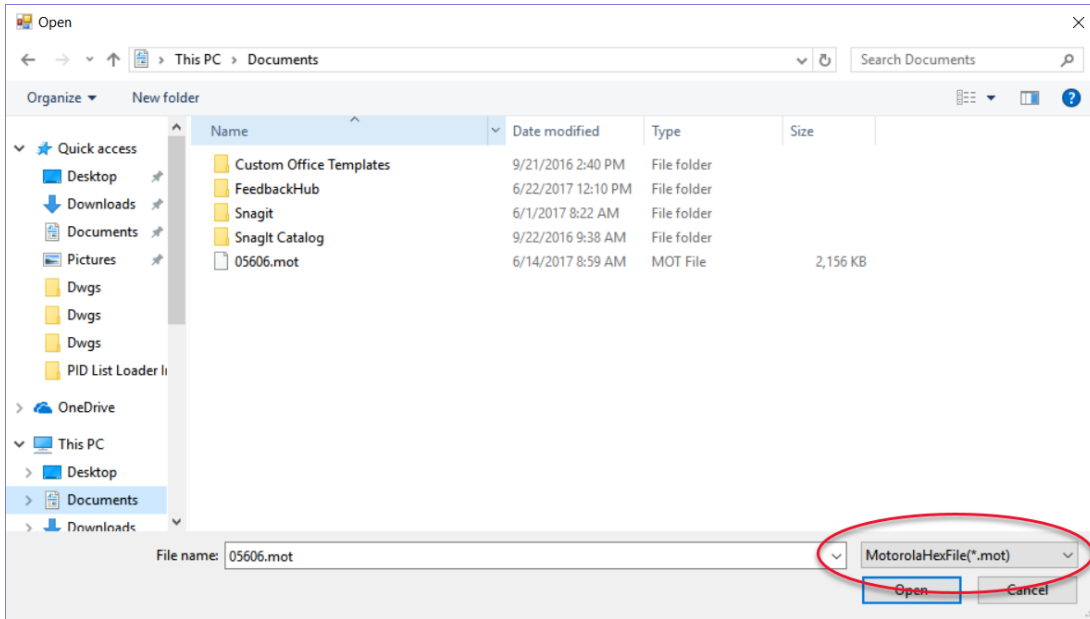
4. Line up the GX-6000's infrared port with the IrDA cable.
5. Turn on the GX-6000.
6. When the GX-6000 is connected, the GX-6000's screen will be blank and the bottom 2 alarm LEDs on the side of the instrument will be on.
7. Click the **Open** button.



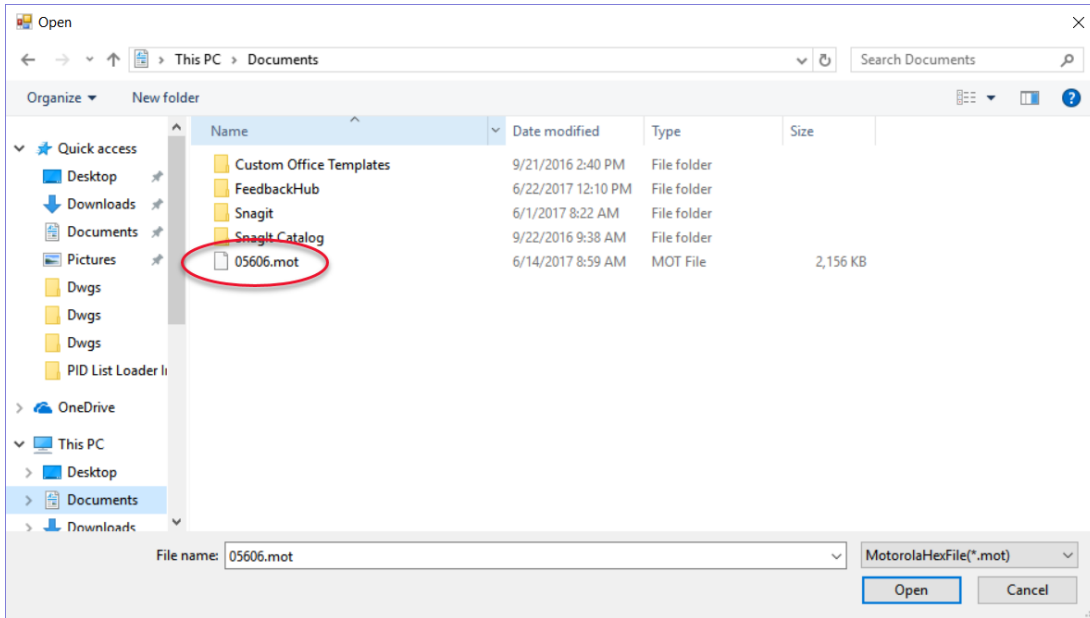
8. The firmware selection screen will appear.



9. Select MotorolaHexFile(*.mot) as the file type in the lower right corner.

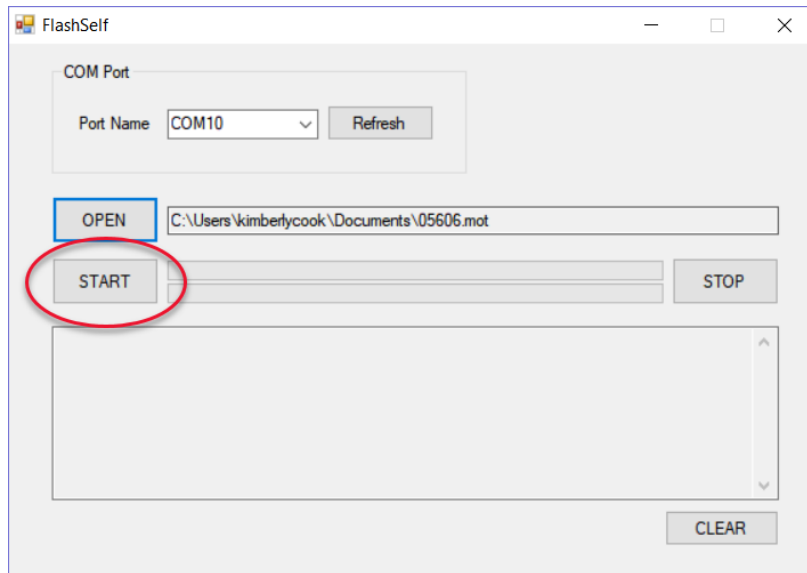


10. Navigate to the location of your saved program file and select the program.

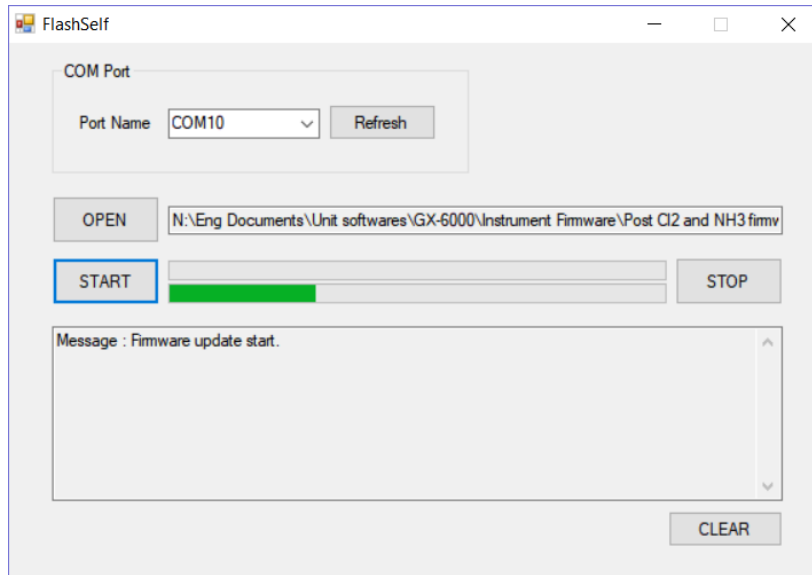


11. Click **Open**.

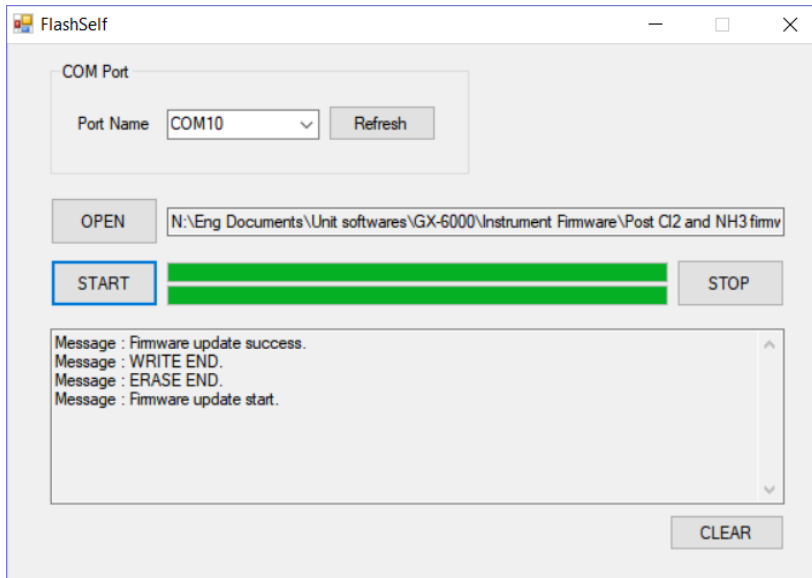
12. Click the **Start** button.



13. Reprogramming will begin.



14. After approximately 30 minutes, the reprogramming will finish.



15. Turn the GX-6000 off by pressing and holding the POWER/ENTER button until the alarm LEDs turn off.