



Continuous monitoring for HCFC's and IPA **INFRARED SINGLE GAS MONITOR**

MODEL RI-255



Features

- Compact & light weight (Approx. 4.2kg/9.27lbs.)
- Easy to install
- Negligible interference from other gases
- Easy to read digital display

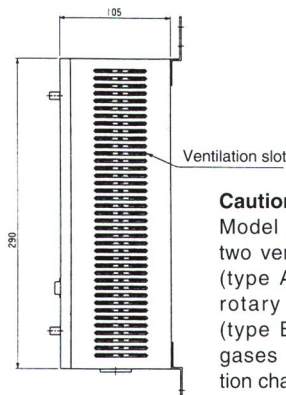
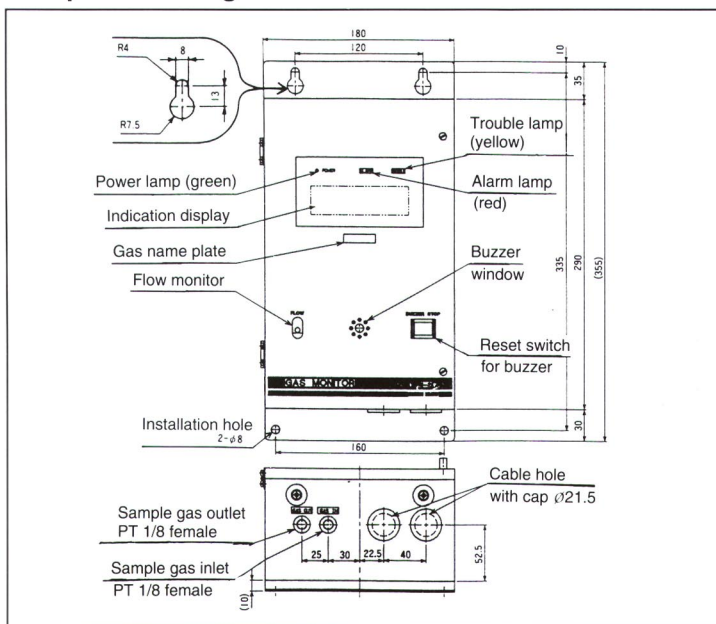
Applications

- Cleaning processes
- Cold-storage plants
- Drying rooms
- Refrigerators



RIKEN KEIKI RKI INSTRUMENTS, INC.

Component designation for RI-255



Caution:

Model RI-255 consists of two versions. HCFC's use (type A) with an internal rotary switch. IPA uses (type B) specified in the gases and ranges detection chart below.

Gases and ranges detection chart

Type	Gas detection	Range	Alarm set point
A	CFC-12	0-4975ppm (25ppm/digit)	1000ppm
	CFC-113	0-4975ppm (25ppm/digit)	500ppm
	CFC-114	0-4975ppm (25ppm/digit)	1000ppm
	HFC-23	0-9950ppm (50ppm/digit)	1000ppm
	HFC-32	0-9950ppm (50ppm/digit)	
	HFC-134a	0-4975ppm (25ppm/digit)	
	HFC-152a	0-9950ppm (50ppm/digit)	1000ppm
	HCFC-22	0-4975ppm (25ppm/digit)	1000ppm
	HCFC-123	0-4975ppm (25ppm/digit)	1000ppm
	HCFC-141b	0-9950ppm (50ppm/digit)	2000ppm
	HCFC-142b	0-4975ppm (50ppm/digit)	1000ppm
	R-502	0-4975ppm (25ppm/digit)	1000ppm
	R-503	0-4975ppm (25ppm/digit)	1000ppm
B	Iso-propyl alcohol	0-9950ppm (50ppm/digit)	5000ppm

*Please specify either Type A (HCFC's version) or Type B (IPA version) when ordering.

Standard accessories	Optional accessories
(1) Dust filter.....1 pce	(a) Gas sampling bag
(2) Fuse (2A).....1 pce	(b) Calibration adapter
(3) Instruction manual ...1 pce	(c) Spare dust filter (inside use)
(4) Test certificate 1 copy	(d) External filter

Specifications for model RI-255

Detection principle	Non-dispersive infrared absorption (NDIR)
Detection gas and ranges	Refer to chart at right (factory-set). Type A: Calibrated by HFC-134a (std.) Type B: Calibrated by Iso-propyl alcohol.
Sampling method	Motor-driven diaphragm pump
Display method	Digital LCD display (4 digits)
Alarm settings	Adjustable
Alarm indication	Gas alarm: Flashing red light and buzzer Trouble alarm: Flashing yellow light and buzzer
Alarm contact point	Gas alarm: 1a (No voltage) Latching Trouble alarm: 1a (No voltage) Non-latching
Capacity of alarm contact point	AC100V, 0.5A (max) / DC30V, 1.5A (max)
External output	4-20mA DC (0-1V DC optional)
Power supply	AC100V, AC117V, or AC220V ±10%, 50/60Hz
Power consumption	Approx. 13VA
Operating temperature and humidity	0-40°C (32°F-104°F), Less than 90% R.H. non-condensing
Outer dimensions & weight	180(W) × 355(H) × 117(D)mm, Approx. 4.2kg 7.1(W) × 13.9(H) × 4.5(D)inch, 9.27lbs.
Housing	Wall mounting, Non-explosion proof

Specifications subject to change without notice

● Distributed By:

RKI INSTRUMENTS, INC.



1855 Whipple Rd.
Hayward, Ca 94544
Tel: (510)441-5656
Fax: (510)441-5650