



# STAND ALONE CALIBRATION STATION

Gas Detection For Life

SM-2000 Series



## Features

- Stand alone system, no PC needed for operation
- Calibrate, bump test, charge, and archive data
- Software manages records by serial #, user ID, or station ID
- Each station is equipped with configuration control and status indicators
- User adjustable test times and tolerances
- Automatic quick charge of instrument in 90 minutes or less
- Alkaline recognition – will not attempt to charge alkaline batteries (SM-2003U)
- Exhaust line connection for test gas venting
- Records are stored as a tab delineated text file (.txt format can be imported into a spreadsheet)
- Software is Windows Vista, and XP compatible
- Operates on any Pentium II or higher PC
- USB port for downloading data to a USB flash drive
- USB flash drive included

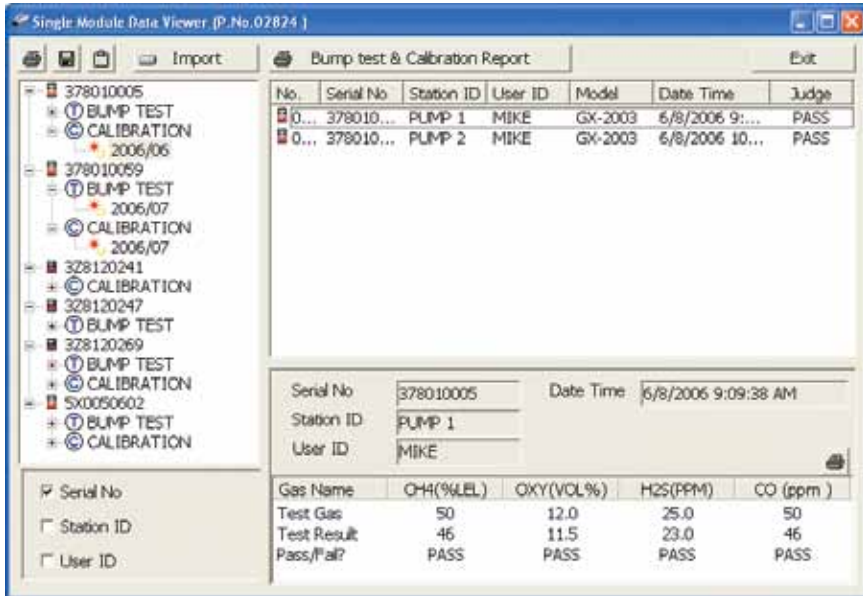
### Models SM-2009U and SM-2003U

The SM-2000 single module calibration station for the GX-2009 and GX-2003 portable gas monitors is a stand alone station that can calibrate, bump test, charge, and archive data without the need of a computer to operate. The module has 4 operating modes, which include bump test only, % volume methane bump/calibration (for the GX-2003), calibration only, and bump with automatic calibration (if the bump test fails). The SM-2000 modules are capable of storing up to 200 bump test or calibration records. To download the data each module includes a 1 GB USB flash drive. Also included is a software package to import the data from the USB drive and manage records by serial #, user ID, or station ID. Each module has user adjustable test times and tolerances to meet specific testing requirements. The charger within the module quick charges battery packs within 90 minutes and will recognize alkaline batteries. The Calibration Station power requirements are 115/230 VAC, 50/60Hz.

Calibration Stations	
81-SM2009U	GX-2009 Calibration station, includes power cord, USB flash drive, and software
81-SM2003U	GX-2003 Calibration station, includes power cord, USB flash drive, and software
81-SM2003UC	GX-2003 Calibration station, includes power cord, USB flash drive, and software (evaluated to Canadian electrical code safety standard)
Calibration Gases & Regulators	
81-0154RK-02	LEL CH <sub>4</sub> /O <sub>2</sub> /CO/H <sub>2</sub> S, 58L
81-0155RK-02	LEL Hexane/O <sub>2</sub> /CO/H <sub>2</sub> S, 58L
81-0090RK-03	LEL CH <sub>4</sub> /O <sub>2</sub> /CO, 103L
81-0089RK-03	LEL Hexane/O <sub>2</sub> /CO, 103L
81-0016RK-05	100% Vol. CH <sub>4</sub> , 58L
81-0151RK-02	H <sub>2</sub> S/N <sub>2</sub> , 58L
81-0078RK-03	100% N <sub>2</sub> , 103L
81-1054RK	Demand Flow Regulator
06-1248RK-03	Calibration Tubing, Polyurethane (3/16" x 5/16" x 3')

# SM-2000 Series

<b>Input Power</b>	115/230 VAC, 50/60 Hz
<b>Environmental Conditions</b>	For indoor use only
<b>Operating Temp. &amp; Humidity</b>	-10°C to +40°C (-14°F to 104°F) 0 to 80% RH, non-condensing
<b>Applicable Instruments</b>	SM-2009U: GX-2009 SM-2003U: GX-2003
<b>Operating Modes</b>	<ul style="list-style-type: none"> <li>• Bump test only</li> <li>• % Volume methane bump/calibration</li> <li>• Calibration only</li> <li>• Bump with automatic calibration (if bump fails)</li> </ul>
<b>Maximum Number of Records Saved</b>	200
<b>Standard Accessories</b>	<ul style="list-style-type: none"> <li>• AC Power Cord</li> <li>• Single Module Data Viewer Software</li> <li>• Inlet Air Filter</li> <li>• Instruction Manual</li> <li>• USB Flash Drive</li> </ul>



Main program window of PC-based software for archiving, viewing, and printing data (included)



Specifications subject to change without notice.



Toll Free: (800) 754-5165 • Phone: (510) 441-5656  
 Fax: (510) 441-5650 • www.rkiinstruments.com

**Authorized Distributor:**